

# Alaska Department of Fish and Game

Habitat Section  
Southeast Region



## 112-50-10100 Tributary 3

## ADDITION

**Water body name:**

**Survey date:** 9/14/2022

**Quad:** Sitka D-4

**Species & Lifestage:**

**Upper Reach Latitude:** 57.853653 **Longitude:** -135.152856

**Survey crew:** DK, RR, EF

**Lower Reach Latitude:** 57.855277 **Longitude:** -135.150155

**Findings:** We surveyed this uncataloged stream using baited minnow traps and GPS. We captured juvenile coho salmon and stickleback. The tributary stream is backwatered due to beaver activity (Table 1; Figures 1, 2).

**Recommendations:** Add this uncataloged stream to the anadromous waters catalog for rearing coho salmon (Figure 3).

**Nomination:** Pending

Table 1.—112-50-10100 tributary 3 survey data.

Waypoint	Latitude	Longitude	Notes	Stream Width ft	Stream Substrate	Habitat Features	Gradient %	Sample Effort	Sample Results
1826	57.853658	-135.152876	Tributary of beaver pond complex.	4-6	Fine Organic	Incised Channel	0-1	MT	25 CO 4 SB



Figure 1.—Juvenile coho salmon captured at waypoint 1826.



Figure 2.—Backwatered channel at waypoint 1826.



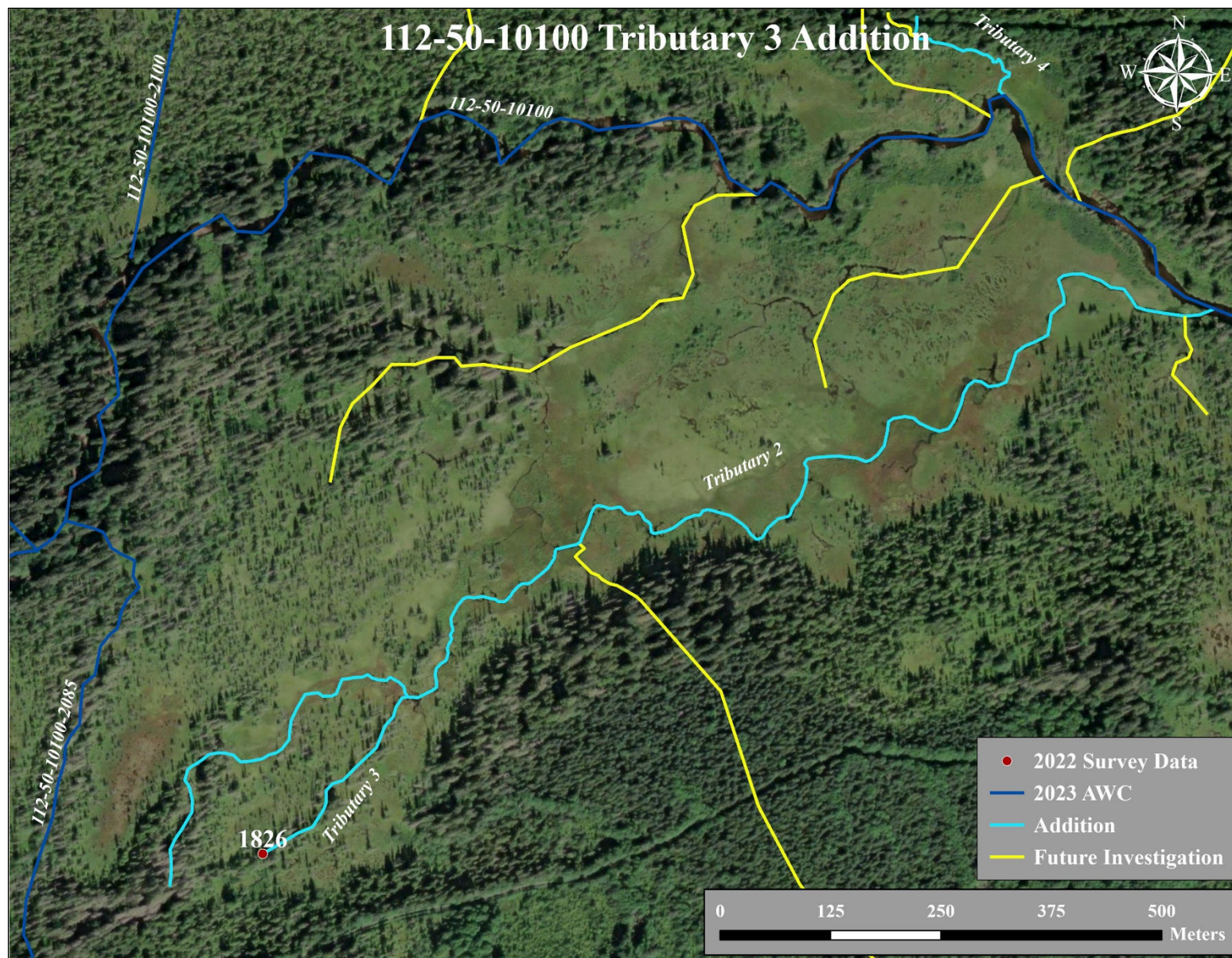


Figure 3.—112-50-10100 tributary 3 addition map.